

① SCALA DI [DO] ⁿ SEMPLICE
PER MOTO CONTRARIO₄

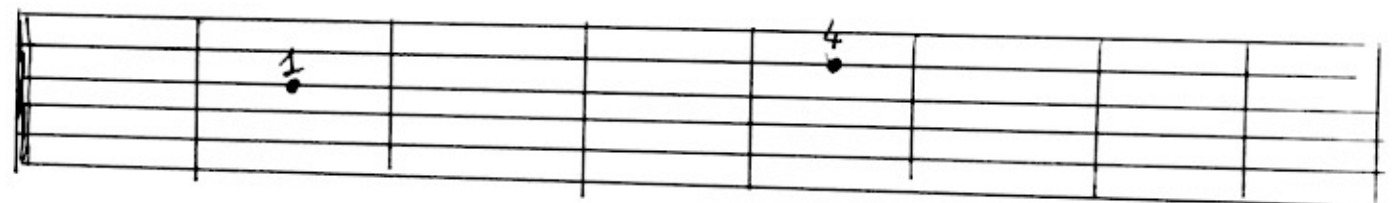


▶ VISUALE SULLA TASTIERA. (4 SPEZZONI)

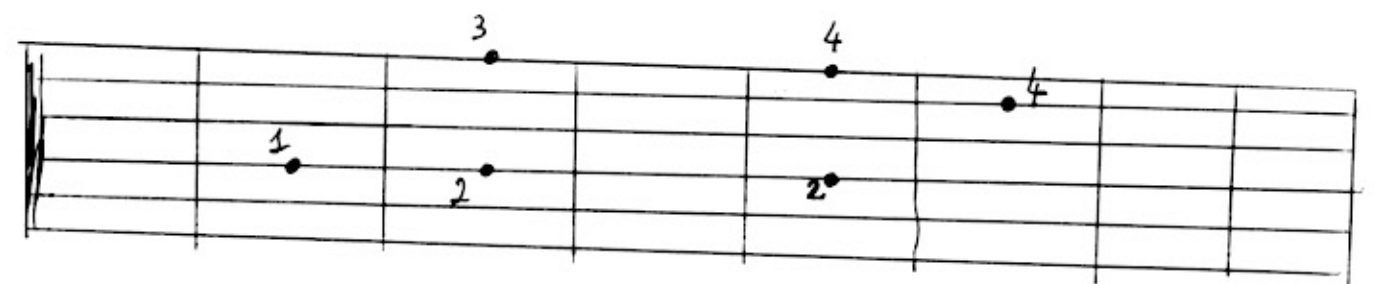
1



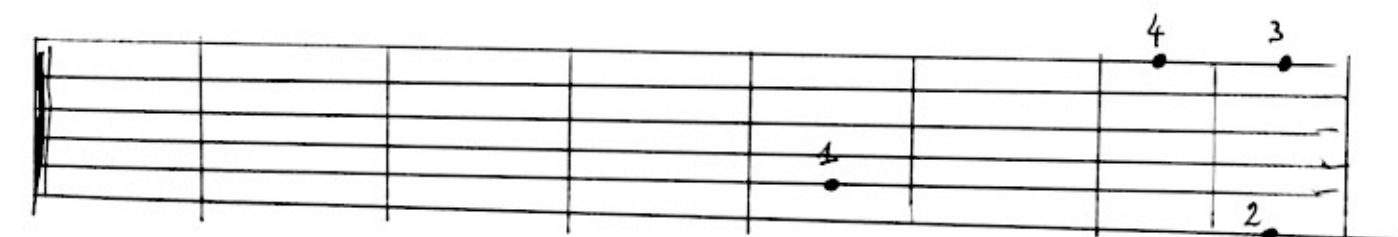
2



3



4



① ESEGUIRE IN MODO ASCENDENTE e DISCENDENTE,
 E IN TUTTE LE TONALITÀ 12 DI MODO
 MAGGIORE.